

# ISLANDER

## ISLANDER INDEX

|  |       |
|--|-------|
| President's Message.....                   | 1     |
| District Dir. News.....                    | 2     |
| Awards Dinner Flier.....                   | 3     |
| 2017 POTY.....                             | 4     |
| February STaC Weekend<br>Results.....      | 5     |
| Claim With<br>Colchamiro.....              | 6-8   |
| LM-NonLM Game.....                         | 9     |
| Spring Reg. Sched.....                     | 10    |
| Regional Hotel<br>Accommodations....       | 11    |
| Teacher's News.....                        | 11    |
| Sharf Article.....                         | 12    |
| Frank Allison KO<br>Winners.....           | 13    |
| Letter to the Editor.....                  | 13    |
| 2017 AC & MM.....                          | 14    |
| Grella Article.....                        | 15    |
| Frank Allison Double<br>KO Entry Form..... | 16    |
| ACBL Rank<br>Requirements.....             | 17    |
| Milestones.....                            | 18-19 |
| NSBA Top 100.....                          | 20    |
| Master Club Schedule..                     | 21    |
| Schedule of Events.....                    | 22    |

## President's Message

After a year of planning we finally get to move into our new home. For the first time since 1990 (I might be off by a year) we will be having our regional in Nassau County. We move to the beautiful Chateau Briand in Carle Place.

Back in the old days our tournaments ran from Friday to Sunday. The two weekend days were by far the biggest. Now when we have weekend days at tournaments they are poorly attended. To avoid this we will be running the tournament from Monday to Thursday. The schedule of dates and events is elsewhere in this issue. There will be something for everyone each day.

Our new facility is everything you could ask for. It is centrally located, near major parkways, one block from a train station, has enough parking for a football game, and is very spacious. We look forward to having many tournaments here. As such, let me just say that the first person I see throwing garbage under their table will not be treated kindly. The second person will not vote for me to be Miss Congeniality either. We want to go back here in the future, and we want them to want us back. Let's all make this the best tournament Long Island has ever had.

We will kick off on Sunday night May 6 with our LM/NLM team game. You can form your own team or we will help get you one. This game will be held at Sagamore.

In other news I would like to congratulate Ljudmila Kamenova on her win in the national Women's Board-a-Match teams at the national championships in San Diego. Well done!

I hope to see you all at the tournament in May.

Joe Byrnes



**NSBA Spring Regional**  
**May 7-10, 2018**  
**The Chateau Briand in Carle Place**  
**See Page 10 for Details**



## DISTRICT 24 NEWSLETTER

By Alvin Levy, District 24 Director

[www.allevybridge.com/](http://www.allevybridge.com/)

Stuff on the Internet. Have you logged on to the [ACBL website](#) lately? There's a new section...[Bridge Feed](#), with bridge happenings from around the world, special events, bridge tips, humor, stories in ACBLand, great lessons from the masters, and much more. Take a look and you may get lost surfing the net. Take a look at the banners on top of the ACBL page. You'll see the new online bridge club for college students. Pass the word around to any college students who play bridge...they can compete individually or on a school team with free trips to the summer NABC for a few winning teams.

Not much publicity for the top online players, so I'll mention the top two District online players in 2017. Congratulations to Russell Samuel of LI and David Maidman of NYC.

When you read this it will be too late to play in the three-day spring NABC online individual robot tournament held on BridgeBaseOnline. Watch for future tournaments.

Log onto your MyACBL page and check your recent results including recap sheets and deals played. Also see your masterpoint history, take part in "It's Your Call," and read the latest Bridge Bulletin.

Speaking of the ACBL Bridge Bulletin, the March issue contains the 2018 ACBL Charity appointees, including our District's selections Ruth Stober and Anita Goldman, and the 2018 Aileen Osofsky Goodwill Committee appointees, including our District's selections Philip Grella and Philip Lentz. Congratulations to all and to all the previous District appointees who serve our District so well.

Have a friend interested in learning to play? Direct them to the ACBL [learning page](#). There they can get started with some keen software or be directed to local and online teachers.

ACBL News...ex-NYer Robb Gordon is the new ACBL National Recorder. A great choice and someone who will make a difference. Read his column, "For the Record" in the March issue.

An experiment... Regional event at clubs (REACH...Regional event At the Club House...ok corny) was an ACBL-wide Regional event played at clubs. On the plus side, players who wanted to earn Gold points and don't get to too many Regionals had a chance for Gold at their club. Clubs enjoyed the extra attendance, and there was revenue sharing with the District. Some of those funds will go to supporting our GNT District teams that qualified for the ACBL finals in Atlanta this summer. On the negative side, it might take attendance away from our regular Regionals. The North American results are being evaluated.

The [2018 World Championships](#) will be held in Orlando. Besides the regular championship events, there will be some shortened events that might be exciting to play in. The Orlando World Center Marriott is an outstanding hotel and there will be a special rate for our players. I'll be quite busy as the US organizer. If you have any questions, just contact me. I'll also be coordinating the 22<sup>nd</sup> annual [World Computer-Bridge Championship](#), held in the second week of the champi-

### **The Islander**

Volume XLII, Number 1 Winter 2018

Editor — Mark Shaiman

The Islander is published twice a year by the Nassau-Suffolk Bridge Association, Inc., Unit 242 of the ACBL.

Advertising is available. Please contact for rates. Not more than 1 page per advertiser.

Address all ISLANDER communications to Mark Shaiman at 15 Sycamore St., Centereach, NY 11720.

Phone: (631) 588-8292. E-Mail: [TheIslanderMS@gmail.com](mailto:TheIslanderMS@gmail.com)

# **NASSAU-SUFFOLK BRIDGE ASSOCIATION AWARDS DINNER**

**Celebrating Our Bridge Achievers of 2017**

**Sunday, May 20, 2018**

**Sagamore Bridge Club**

**6901 Jericho Tpk, Syosset**



**Registration at 4:30 P.M.**

**Buffet Dinner from 5:00 to 6:00 P.M.**

**Awards Program at 6:15 P.M.**

**Sanctioned Bridge Game at 7:00 P.M.**

**Cost to NSBA members: \$27      Non-NSBA members: \$30**

**Please return form by May 12 to:**

**Debra Thaw**

**107 Cabot Court**

**St. James, N.Y. 11780**

**For more information please contact:**

**Debra at (631) 828-1719      or**

**Susan at (631) 681-0404**

**Partnership: \_\_\_\_\_ & \_\_\_\_\_**

## 2017 Players of the Year\*

### At Sectionals — A Players

|                        |      |
|------------------------|------|
| 1. Ruth Stober         | 86.6 |
| 2. Gary Helman         | 85   |
| 3. Jeffrey Colton      | 79   |
| 4. Howard Cohen        | 64.9 |
| 4. Geoffrey O'Connor   | 64.9 |
| 6. Barry Nish          | 63.3 |
| 7. Eppie Eagle         | 60   |
| 8. Lesley Decker Lucas | 59.1 |
| 9. Mel Colchamiro      | 58.7 |
| 10. Mark Blanchard     | 56.8 |

### At Sectionals — B Players

|                     |       |
|---------------------|-------|
| 1. Jeffrey Colton   | 108.9 |
| 2. Debra LaMountain | 99.8  |
| 3. Matt Rewinski    | 58.4  |
| 4. Eppie Eagle      | 51.6  |
| 5. John Abrenica    | 47.5  |
| 6. Ann Gardner      | 46.6  |
| 7. Erica Silver     | 42.4  |
| 8. Debra Katz       | 36.4  |
| 9. Laura O'Reilly   | 36.3  |
| 10. Hubert Howe     | 34.5  |

### At Regionals— A Players

|                     |      |
|---------------------|------|
| 1. Bob Gwartzman    | 87   |
| 2. Jack Lipson      | 66   |
| 3. Howard Friedman  | 47   |
| 4. Carl Guelli      | 45   |
| 5. Dori Cohen       | 43.5 |
| 5. Rob Gordon       | 43.5 |
| 7. Dina Arker       | 40   |
| 8. Alan Greenbaum   | 39   |
| 9. Karl DeShrage    | 35   |
| 10. Bart Cirker     | 34   |
| 10. Michael Fishman | 34   |

### At Regionals — B Players

|                    |    |
|--------------------|----|
| 1. Debra Katz      | 68 |
| 2. Dina Schechter  | 66 |
| 3. Alan Greenbaum  | 56 |
| 3. Mark Inhaber    | 56 |
| 5. Charles Bilich  | 53 |
| 5. Mark Blanchard  | 53 |
| 5. Abbot Feren     | 53 |
| 8. Joseph Byrnes   | 48 |
| 8. Dorothy Feldman | 48 |
| 8. Herbert Feldman | 48 |

### NOVICE

|                   |       |                       |       |
|-------------------|-------|-----------------------|-------|
| 1. Leon Yu        | 28.12 | 6. Douglas Casper     | 13.37 |
| 2. Ann Burns      | 23.04 | 7. Gail Wholl         | 12.3  |
| 3. Victor Poon    | 17.15 | 8. Elizabeth Shapiro  | 11.9  |
| 4. Richard Shanks | 14.57 | 9. Rose Taff          | 11.86 |
| 5. Ann Block      | 14.23 | 10. Stephen Weintraub | 10.03 |

Compiled by Mark Blanchard

\*determined by a weighted formula

# February 9-11 STaC Weekend

## **Friday Morning Open Pairs**

### Stratum A (29.5 tables)

- 1 Cal Rafuse – Laura Kopp
- 2 David Joseph – David Popper
- 3 Dorothy Feldmann – Herbert Feldmann

### Stratum B

- 1 Cal Rafuse – Laura Kopp
- 2 Sondra Nachbar – Norman Nachbar
- 3 Mark Inhaber – Elliot Diamond

### Stratum C

- 1 David Kirschenbaum – Lamia Beydoun
- 2 Harvey Schachter – Edward Niemira
- 3 Karel De Leeuw – Susan Clarke

## **Saturday Morning 499er Pairs**

### Stratum A (10 tables)

- 1 Fran Peterson – Amy Barash
- 2 Tina Hye – Lisa Hadar
- 3 Faith Herzog – Victor Poon

### Stratum B

- 1 Faith Herzog – Victor Poon
- 2 Linda Linchitz – Ellen Cooper
- 3 Ann Block – Martin Block

### Stratum C

- 1 Louise Schwartz – Michael Scholnick
- 2 Carrie Callegari – Greg Callegari
- 3 Usha Patel – Howard Maier

## **Saturday Afternoon Open Pairs**

### Stratum A (32.5 tables)

- 1 Christine Woodring – Nancy Buonara
- 2 Mel Colchamiro – Leslie Sarf
- 3/4 Charles Sharf – Howard Cohen
- 3/4 Raymond Elias – Edward Niemira

### Stratum B

- 1 Raymond Elias – Edward Niemira
- 2 Silvana Zangri – Sheila Pohly
- 3 Penny Redvanly – Lisa Pomerantz

### Stratum C

- 1 Penny Redvanly – Lisa Pomerantz
- 2 Louise Schwartz – Jeff Smith
- 3 Catherine Layden – Janet Contrada

## **Sunday Afternoon Open Pairs**

### Stratum A (18 tables)

- 1 Raymond Elias – Edward Niemira
- 2 Bob Gwartzman – Arthur Brodsky
- 3 Val Link – Barbara Stampf

### Stratum B

- 1 Raymond Elias – Edward Niemira
- 2 Val Link – Barbara Stampf
- 3 Gail Wholl – Alvin Frohman

### Stratum C

- 1 Val Link – Barbara Stampf
- 2 Mark Winters – Kenneth Gittelson
- 3 Susan Port – Barry Port

## **Sunday Afternoon Sagamore Swiss**

### Stratum A (14 tables)

- 1 Karl De Shrage – Elaine De Shrage – Bella Chiusano – Lin Fisher
- 2 Marion Yonke – John Berry – Doris Tilles – Peter Tilles
- 3/5 Barbara Amelkin – Stanley Amelkin – Alan Kudisch – Jeanne Hanrahan
- 3/5 David Sloane – Victor Poon – Amy Barash – Fran Peterson
- 3/5 Kay Cha – Young Cha – Meredith Walfish – Barry Walfish

### Stratum B

- 1 David Sloane – Victor Poon – Amy Barash – Fran Peterson
- 2 Kay Cha – Young Cha – Meredith Walfish – Barry Walfish
- 3 Ed Trepper – Eileen Zanar – Drew Tarhan – Lisa Hadar

### Stratum C

- 1 Ellen Cooper – Donna Launer – Linda Linchitz – Elizabeth Shapiro

**LIBRIDGE.COM**

**The NSBA Website**

- **Upcoming Tournament Dates**
- **LI Club Locations & Schedules**
- **Useful Bridge Links**
- **Tournament Results**
- **Find a Bridge Teacher**
- **The Islander**

**And Much More!**

# Claim with Colchamiro

By Mel Colchamiro



LI Player of the Year  
2008, 2003, 2001, 1999, 1998, 1997, 1996  
LI Senior Player of the Year  
2008

## A, K or Q Leads Vs. No Trump

Unless we are taking a stab at leading partner's long suit when we have a hopelessly weak hand, we usually lead our long suit vs NT contracts. We should be leading 4<sup>th</sup> best or low (by partnership agreement) from broken holdings, and top of 3-card or longer sequences beginning with the 10. In other words, from K8762 we lead the 6, 4<sup>th</sup> best, not the 8 "top of the sequence." From K10982, we lead the 10 (some hyper-modernists lead the 9 meaning "zero or two" higher, in this case 2 higher—the 10 and the K). The J can be led from AJ10, KJ10, or J109 unless, of course you have agreed to the "zero or 2 higher" thing, in which case you would lead the 10 from the first two holdings. But have you discussed the issues and do you have agreements about leading an Ace, King or Queen vs NT? Many players haven't.

## The Issues

When leading a high honor, there are (3) issues:

(1) Don't get caught in a "Bath Coup" situation. That is, you lead the K from KQ10 and declarer holds off with the AJx. We don't want to be suckered into continuing the suit, giving the declarer an unwarranted trick with the J.

(2) We have an AKJ situation on lead and want to run the suit if partner has the Q or trap the Q if declarer has it.

(3) We have a very solid holding—4 deep, either AKJ10 or KQ109 and would like partner to "unblock" (throw away) the missing honor if she has it.

## Make An Agreement

We need an honor-leading agreement that covers all three possibilities. The one that I recommend is as follows:

(1) The lead of the Ace or the Queen asks if partner has a touching honor. If so she is to signal positively, if not signal negatively. In other words, the opening leader needs an attitude signal.

(2) The lead of the K requests an unblock of any honor. If partner has no honor card in that suit, she is to play a "count" card, meaning a low one holding three low cards or a high one if holding two or four cards.

The way I remember which is which is by the K sound— A King lead asks for unblock or Kount; The lead of the Ace or Q, asks for attitude.

## Leading The King

The only time we lead the king is from:  
AKJ10(xx) or KQ109(xx)

When we are “4-deep” we can afford for partner to throw her honor under our King—the Q in the first case or the J in the second case.

| <u>Example 1</u> | <u>Example 2</u> | <u>Example 3</u> |
|------------------|------------------|------------------|
| 982              | 982              | 982              |
| AKJ107      Q3   | AKJ107      63   | AKJ107      643  |
| 654              | Q54              | Q5               |

In each case, we lead the K. In example 1, partner plays the Q to unblock, as requested and we run the suit. In example 2, partner has no honor to unblock, so she gives count with the 6, clearly the top of a doubleton from the viewable spots. So we know declarer has 3 to the Q, so we shift, hoping to get partner on lead to lead our suit through. In Example 3, partner’s 3 is clearly low, indicating an odd number of cards—3—so we know declarer’s Q will fall under our ace.

## Leading The Ace

The only time we lead the ace is from AKJ(xx). This asks for attitude for the Q. From Q82 partner would play the 8, but from 832 partner would play the 2. Seeing the 8, the opening leader should underlead at the second trick to partner’s Q and off we go. With a doubleton, say, 82, partner should play the 2—a negative signal regarding the Q; she doesn’t have it, so we would shift.

Well, I lied. There is a second time we should lead the ace. From exactly AKxx. It is an exception to the idea that we need three consecutive honors (or two in a row, a gap, and then the fourth one: AKJx, for example). Lead the A and look for partner’s signal regarding the Q.

## Leading The Q

This is the tricky one, because I am recommending leading the Q from KQ10(xx). We lead the Q, asking for partner’s attitude for the J or A. Remember we don’t want to fall prey to The Bath Coup, whereby the declarer holds off with the AJx, and we fall into her trap by continuing.

When we lead the Q partner should play a high spot with either the J or A, and a low one otherwise.

| <u>Example 1</u> | <u>Example 2</u> | <u>Example 3</u> |
|------------------|------------------|------------------|
| 56               | 56               | 56               |
| KQ1082      973  | KQ1082      A73  | KQ1082      J73  |
| AJ4              | J94              | A94              |

In example 1, partner plays the 3 to deny both the J and the A. Therefore we know declarer is trying to Bath Coup us with the AJ, but we won’t be fooled. We shift, hoping partner can gain the lead and shoot through the declarer. In examples 2 and 3, partner

(continued on page 8)

# NSBA ISLANDER

plays the 7, indicating possession of either the ace or the Jack. In either case, we continue with a low card.

## Taking A Shot

All of us occasionally take a shot and lead from KQx or QJx, particularly in an unbid major. If you do, don't forget, lead the Q from KQx, looking for positive attitude for the J or A. Leading the Q from QJx requests attitude for the K or A.

## Oops, There It Is

Is there a downside to all this? Only one. And that is that we're leading an unnatural Q from a KQ combination. You have to remember to do it and partner has to remember you've done it. So, at the beginning, there might be an Oops! ("Sorry partner I forgot").

### Summary

Lead

Partner's Lead Requests

|                 |  |
|-----------------|--|
| <u>A</u> KJxx   | attitude for the Q                                   |
| -----           |  |
| A <u>K</u> J10x | unblock the Q or give<br>count with no honor         |
| -----           |  |
| <u>A</u> Kx     | Attitude for the Q                                   |
| -----           |  |
| K <u>Q</u> 10x  | Attitude for A or J                                  |
| -----           |  |
| <u>K</u> Q109   | Unblock the J(or ace)<br>or give count with no honor |
| -----           |  |
| K <u>Q</u> x    | Attitude for the A or J                              |
| -----           |  |
| <u>Q</u> J10x   | Attitude for the K or A                              |
| <u>Q</u> J109   | Attitude for the K or A                              |
| <u>Q</u> Jx     | Attitude for the K or A                              |



# **Life Master—Non-LM Charity**

## **Red Point**

### **Bracketed Team Game**



Sunday, May 6, 2018 6:00 pm

Casual Dinner at 5:00 pm

Sagamore Bridge Club

6901 Jericho Turnpike

Syosset, NY 11791

Each partnership consists of 1 Life Master and 1 non-Life Master (who has fewer than 400 points). Thus, each team will have 2 LMs and 2 Non-LMs.

Life Masters play free.

Arrange your own partnership or team or we will find a partner/team for you.

No regular partnerships, please.

Pre-registration is greatly appreciated.

Please mail in form or e-mail Lesley at [lesleyd12@yahoo.com](mailto:lesleyd12@yahoo.com) ASAP.

**Lesley Decker Lucas**

**231 Baird Court**

**Woodbury, NY 11797**

Call Lesley at 516-364-2388 for further information.

-----  
Name \_\_\_\_\_

Phone \_\_\_\_\_

Partner's Name \_\_\_\_\_ I Need a Partner \_\_\_\_\_

I am a Life Master \_\_\_\_\_ I am a non-Life Master \_\_\_\_\_

Please include the number of masterpoints for each member of your team

# NSBA ISLANDER

## Long Island "Gold Coast" Spring Regional

### ♠ May 6-10, 2018

#### New Venue:

**Chateau Briand**

**440 Old Country Road**

**Carle Place, NY 11514**

**516-334-6125**



#### Hotel Accommodations:

**Holiday Inn — Westbury**

**369 Old Country Road**

**Carle Place, NY 11514**

**516-213-9120**

SUNDAY May 6

Non LM / LM Charity Teams (Red) (Each pair must have a LM and an under 400 player) .....6:00 pm

**NOTE:** This game will be held at the Sagamore Bridge Club, 6901 Jericho Tpk, Syosset, NY 11791, 516-558-7799

MONDAY May 7, TUESDAY May 8, WEDNESDAY May 9, and THURSDAY May 10

Stratified Newcomer Single Session Pairs (0-200), (Red) (Guaranteed Partners)..... 10:30 am

Gold Rush Pairs (300-750, 0-300)..... 10:30 am & 3:00 pm

Open Pairs A (3000+), B (1500-3000), C (0-1500).....10:30 am & 3:00 pm

Bracketed Round-Robin Teams .....10:30 am & TBA

**GOLD AWARDED IN BRACKETED EVENTS (In each bracket of 8 teams, 3 receive gold)**

**ALL STRATIFIED EVENTS — OPEN PAIRS**

**A (3000+), B (1500-3000), C (0-1500)**

**ALL NEWCOMER EVENTS AWARD RED POINTS**

**A (100-200), B (50-100), C (0-50)**

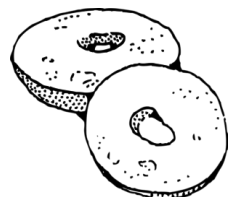
**Tournament Chairman: Lee Launer 516-628-2546 • [actuary3@hotmail.com](mailto:actuary3@hotmail.com)**

**Tournament Manager: Susan Toporovsky • [SusieTee60@gmail.com](mailto:SusieTee60@gmail.com)**

**Partnerships Arranged: Mark Leibowitz 516-972-8125 • [LEIBO52@aol.com](mailto:LEIBO52@aol.com)**



**Complimentary Coffee, Tea, and Bagel Breakfast Every Morning!**



## **2018 Long Island Gold Coast Spring Regional Hotel Reservations**

Dear Bridge Players:

Arrangements have been made with the Holiday Inn of Westbury with reduced rate hotel accommodations for our Spring Regional.

Reservations may be made with the Holiday Inn Central Reservations Office at 855-744-8690. Refer to the Nassau-Suffolk Bridge Association room block for the special group rate.

Reservations may also be made online at [www.hiwestburyhotel.com](http://www.hiwestburyhotel.com) and enter “NSB” in the “Group Code” section of the booking screen.

Sincerely,

Lee Launer, Tournament Chair

### **TEACHERS’ NEWS**

We need teachers for the 2018/2019 youth programs!

Our Long Island Bridge For Youth program is expanding. Thanks to our many volunteers, we had more schools than ever participating, and we have commitments from even more schools for the fall. Be a part of this rewarding program. Nothing is more fun than watching the kids play and enjoy our wonderful game.

Email Carol Mathews ([mathewscj@aol.com](mailto:mathewscj@aol.com)), or Jim Schneider ([whistle21751@gmail.com](mailto:whistle21751@gmail.com)), to find out how you can join our teaching teams. You need not be a bridge expert or teacher...you only need to want to work with the kids.

# Why Colchamiro (and His Partners) Get To Claim So Often

By Charles Sharf

I had the pleasure of playing with Mel in the spring nationals in Kansas City and the following hand came up. See how many of Mel's bids you come up with (there are only two).

Mel held:

- ♠ - x
- ♥ - KQxxx
- ♦ - Jxx
- ♣ - KQJx

Not a bad hand when partner opens one heart. RHO overcalls 2♦ and it's your call. There are 2 very reasonable choices

3♠ -- a splinter showing spade shortness and a good heart fit

3♦ -- showing a limit raise or better in hearts

Your choice?

Mel came up with 3 clubs, showing where his values are, knowing he could always bid hearts later.

This was followed by 3 diamond bids:

3 diamonds by LHO. A simple raise.

4 diamonds by partner — ostensibly a good hand with club support.

5 diamonds by RHO — Extra diamond length.

So now it's your call again.

| Charles | Opp. | Mel | Opp. |
|---------|------|-----|------|
| 1♥      | 2♦   | 3♣  | 3♦   |
| 4♦      | 5♦   | ?   |      |

Mel jumped to 6♥, knowing I must have short diamonds, and since I showed extra strength with no points in diamonds, and at most I could have AJ of hearts and A of clubs, I should have spades covered.

Did you come up with the same bids as Mel?

My hand was:

- ♠ - AQJx
- ♥ - AJxxx
- ♦ - Void
- ♣ - Axxx

I thought for 5 seconds before I bid 7, which may have been 4 1/2 seconds too long. Mel bid 6 and I had first round control of every suit!!!

**2017 Frank Allison Knockout Winners — Flight B**



**Mark Blanchard, Dina Schechter, Charles Bilich,  
Norman Trabulus, and Abbott Feren (captain).**

---

**2017 Frank Allison Knockout Winners — Flight A**

**Mel Colchamiro, Charles Sharf, Howard Cohen, Jack Lipson**

Dear Editor:

I am sure you will be surprised at the content of my letter, for it has less to do with the brainy-ness, nor complication, nor strategy of our exceptionally challenging game/passion.

Bravo to Karen Walker. “12 Habits of highly....” page 58, October bulletin. “Temperature.” A frequent complaint is that the playing area is too cold. That’s actually a boon for mental function et al..” Would the “old ladies,” of which I qualify in age, bring sweaters and shawls....I am one who gets logy and falls asleep when it is warm, and that is also when germs multiply..

And to all my Long Island bridge club owners...keep the temperature down please...I can play bridge 5 + times a week but cannot stand warm/hot rooms. If you players want a warm room go back and play house games..stop complaining ...and p.s although not in her column...but when you are sneezing and coughing, please stay home. I am very healthy, an exerciser, not overweight. and have gotten two terrible colds the last few months from hackers and sneezers at the table.

Keep the rooms cool.

Bonnie Salkind

# NSBA ISLANDER

## 2017 Masterpoint Races

### Ace of Clubs

|                    |        |
|--------------------|--------|
| Leon Yu            | 45.83  |
| Tim Archdeacon     | 35.78  |
| Sanford Leventhal  | 30.58  |
|                    |        |
| Anne Burns         | 89.75  |
| Richard Shanks     | 68.10  |
| Rusty Auerbach     | 36.09  |
|                    |        |
| Lawrence Brochin   | 52.48  |
| Ross Taff          | 49.74  |
| Barry Reiber       | 42.47  |
|                    |        |
| Ann Block          | 85.29  |
| Douglas Casper     | 42.37  |
| Daniel Goldschmidt | 39.90  |
|                    |        |
| Milton Alschuler   | 79.91  |
| David Bass         | 74.14  |
| Laura Kopp         | 60.25  |
|                    |        |
| Erika Silver       | 101.29 |
| Raymond Presti     | 72.54  |
| Sharon Melville    | 67.66  |
|                    |        |
| Robin Brendell     | 138.71 |
| Vijay Datta        | 90.56  |
| Ruth Lessinger     | 74.26  |
|                    |        |
| Debra LaMountain   | 178.85 |
| Janine Buss        | 165.79 |
| Raymond Elias      | 149.43 |
|                    |        |
| Jeffrey Colton     | 221.33 |
| Drew Tarhan        | 162.43 |
| Ann Gardner        | 147.64 |
|                    |        |
| Barry Nish         | 344.19 |
| Matt Rewinski      | 178.74 |
| Karen Pollack      | 168.72 |
|                    |        |
| Bart Cirker        | 200.18 |
| Lawrence Goodman   | 188.32 |
| Alan Kudisch       | 179.74 |
|                    |        |
| Karl De Shrage     | 279.25 |
| Leslie Sarf        | 219.90 |
| Carl Gueli         | 183.97 |
|                    |        |
| Geoffrey O'Connor  | 313.73 |
| Honey Ellis        | 313.04 |
| Mark Leibowitz     | 243.60 |

### Mini-McKenney

#### 0-5 MPs

|                   |       |
|-------------------|-------|
| Leon Yu           | 78.54 |
| Tim Archdeacon    | 41.23 |
| Sanford Leventhal | 35.37 |

#### 5-20 MPs

|                |       |
|----------------|-------|
| Anne Burns     | 122.3 |
| Richard Shanks | 82.53 |
| Susan Nettler  | 37.35 |

#### 20-50 MPs

|                  |       |
|------------------|-------|
| Ross Taff        | 80.48 |
| Lawrence Brochin | 62.85 |
| Barry Reiber     | 53.97 |

#### 50-100 MPs

|             |        |
|-------------|--------|
| Victor Poon | 113.22 |
| Ann Block   | 106.53 |
| Ilan Wolff  | 74.91  |

#### 100-200 MPs

|              |        |
|--------------|--------|
| Amy Barash   | 115.14 |
| Ellen Cooper | 104.42 |
| David Bass   | 99.17  |

#### 200-300 MPs

|                 |        |
|-----------------|--------|
| Erika Silver    | 220.84 |
| Fran Peterson   | 141.53 |
| Sharon Melville | 128.14 |

#### 300-500 MPs

|                 |        |
|-----------------|--------|
| Robin Brendell  | 194.37 |
| Beatrice Bohm   | 152.85 |
| Jeanne Hanrahan | 146.30 |

#### 500-1000 MPs

|                  |        |
|------------------|--------|
| Janine Buss      | 419.08 |
| Debra LaMountain | 374.38 |
| Raymond Elias    | 199.23 |

#### 1000-1500 MPs

|                |        |
|----------------|--------|
| Jeffrey Colton | 323.36 |
| Hubert Howe Jr | 199.87 |
| Ann Gardner    | 195.05 |

#### 1500-2500 MPs

|                |        |
|----------------|--------|
| Mark Blanchard | 720.59 |
| Barry Nish     | 415.56 |
| Dina Schechter | 251.88 |

#### 2500-3500 MPs

|              |        |
|--------------|--------|
| Alan Kudisch | 341.68 |
| Howard Cohen | 247.01 |
| Bart Cirker  | 245.35 |

#### 3500-5000 MPs

|                |        |
|----------------|--------|
| Karl De Shrage | 327.09 |
| Gary Helman    | 311.25 |
| Leslie Sarf    | 267.34 |

#### 5000-75000 MPs

|                   |        |
|-------------------|--------|
| Ljudmila Kamenova | 535.31 |
| Geoffrey O'Connor | 401.47 |
| Honey Ellis       | 370.77 |

# NSBA ISLANDER

## 2017 Masterpoint Races (continued)

### Ace of Clubs

|                     |        |
|---------------------|--------|
| Doris Rodgers       | 242.96 |
| Lesley Decker Lucas | 149.65 |
| Irma Korenstein     | 140.43 |

|                |        |
|----------------|--------|
| Ruth Stober    | 319.32 |
| Mel Colchamiro | 130.68 |

### 7500-10000 MPs

### Over 10,000 MPs

### Mini-McKenney

|                     |        |
|---------------------|--------|
| Doris Rodgers       | 296.01 |
| Lesley Decker Lucas | 226.52 |
| Diana Schuld        | 224.76 |

|                |        |
|----------------|--------|
| Bob Gwartzman  | 626.04 |
| Ruth Stober    | 447.39 |
| Mel Colchamiro | 349.37 |

## Just Another Zero Playing Matchpoints!

### By Philip Grella

Playing in a club game I held:

♠ - AQxx  
 ♥ - QJx  
 ♦ - KQx  
 ♣ - 432

Looked like an opening hand so I decided to bid 1♦, just in case my partner ended up on lead. The bidding after that went pass-pass-double- all pass.

Left led the ♥6 and I now saw dummy.

♠ - Txxxx  
 ♥ - Txxx  
 ♦ - Txx  
 ♣ - Q

Partner might have tried a redouble, hoping to find a major suit fit, but here we are and I have to try to make the best of it.

Opponents hands:

|           |          |
|-----------|----------|
| ♠ - K     | ♠ - Jxx  |
| ♥ - 63    | ♥ - AKxx |
| ♦ - AJxxx | ♦ - 43   |
| ♣ - AT987 | ♣ - KJxx |

Righty won the ♥K and played a diamond. Low from me, lefty winning the Jack. Back came the ♥3, righty winning the Ace and playing another diamond, Queen, ace from lefty (who I'm now growing to dislike). Lefty played another diamond so now I'm in my hand. I play the ♥Q. Lefty ruffs and plays the ♣A and another club. His partner cashes 2 more clubs and now plays a spade. I play the Q, hoping for down 4 and lefty wins the K and cashes out his diamond and 2 more clubs. Down 6 ! Opponents took 12 tricks !  
 Only a big fat ZERO playing matchpoints !



## Frank Allison Double Knockout Team Entry Form

**Teams will be told a MUST PLAY BY DATE.  
One match per month.  
Monthly results updated on the LIBRIDGE.com.  
Each team may have up to 6 players.  
It is suggested you include more than 4 players to facilitate arranging game dates.  
Please submit entry by April 30.  
Please print clearly all information requested**

Name ( First , Last )

(Captain) 1) \_\_\_\_\_ Phone# \_\_\_\_\_ email \_\_\_\_\_

(Assistant Captain)  
2) \_\_\_\_\_ Phone# \_\_\_\_\_ email \_\_\_\_\_

(Other team members)

3) \_\_\_\_\_

4) \_\_\_\_\_

5) \_\_\_\_\_

6) \_\_\_\_\_

Please check ONE:

- We want to play in Flight A (open to all players)
- We want to play in Flight B (No player may have more than 2500 pts.)
- We want to play in Flight C (No player may have more than 1000 pts.)
- We want to participate in more than one Flight. ( \$60 for each Flight )

**Entry fee \$40 Make check out to the NSBA.**

Send to : Joseph D. Byrnes or  
349 East Broadway  
Long Beach, NY  
11561

Phil Grella  
29 Kennedy Ave.  
Rockville Centre, NY  
11570

TEAM CAPTAINS: It is YOUR responsibility to read and be familiar with the Conditions of Contest. They can be found on the NSBA (libridge.com) website or at a local club. Lack of knowledge does not constitute cause for exemption. Geographical considerations will be given for early matches.

**The Coordinator reserves the right to adjust masterpoint limits on all brackets.  
Brackets "B"& "C" may be combined if not enough teams register in each bracket.**

Any bridge club in our unit will be available for matches during their regularly scheduled game times. Please contact the club and inform them you want to schedule a match. Normal club game fees will be collected at the clubs. A listing of clubs is available at Libridge.com



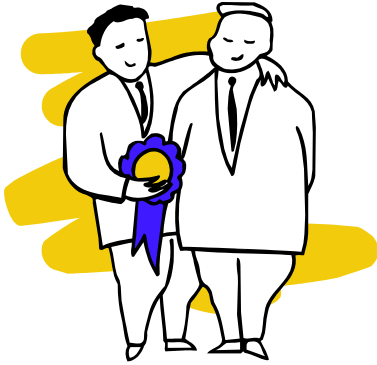
## American Contract Bridge League Masterpoint Rank Requirements

### If You Joined the ACBL Before January 1, 2010

### If You Joined the ACBL After Dec. 31, 2009

| Masterpoint Requirement | Of Which, Minimum Requirements   | Rank                        | Masterpoint Requirement | Of Which, Minimum Requirements  |
|-------------------------|--|-----------------------------|-------------------------|---|
| 0                       |  | <b>Rookie</b>               | 0                       |   |
| 5                       |  | <b>Junior Master</b>        | 5                       |   |
| 20                      |  | <b>Club Master</b>          | 20                      | 5 black   |
| 50                      | 5 silver   | <b>Sectional Master</b>     | 50                      | 5 silver, 10 black  |
| 100                     | 15 silver, 5 red or gold/platinum  | <b>Regional Master</b>      | 100                     | 15 silver, 15 black,<br>5 red or gold/platinum  |
| 200                     | 50 pigmented, of which 25 must be silver, 15 must be red or gold/platinum, of which 5 must be gold/platinum                    | <b>NABC Master</b>          | 200                     | 20 red or gold/platinum, of 5 are gold/platinum, 25 silver, 20 black  |
|                         |  | <b>Advanced NABC Master</b> | 300                     | 50 red or gold/platinum, of which gold/platinum, 50 silver, 50 black  |
| 300                     | 100 pigmented, of which 25 must be gold/platinum, 25 must be red or gold/platinum, and 50 must be silver; 50 black             | <b>Life Master</b>          | 500                     | 100 red or gold/platinum, of which 50 are gold/platinum; 75 silver; 75 black  |
| 500                     | and LM requirements  | <b>Bronze Life Master</b>   | 750                     | and LM requirements   |
| 1000                    | LM requirements with at least 200 silver, red, or gold/platinum  | <b>Silver Life Master</b>   | 1000                    | LM requirements, with at least 200 silver, red, or gold/platinum  |
| 1500                    | LM requirements, with at least 300 silver, red, or gold/platinum   | <b>Ruby Life Master</b>     | 1500                    | LM requirements, with at least 300 silver, red, or gold/platinum  |
| 2500                    | LM requirements, with at least 500 silver, red, or gold/platinum   | <b>Gold Life Master</b>     | 2500                    | LM requirements, with at least 500 silver, red, or gold/platinum  |
| 3500                    | LM requirements, with at least 750 silver, red or gold/platinum, of which 350 must be gold or platinum                         | <b>Sapphire Life Master</b> | 3500                    | LM requirements, with at least 750 silver, red or gold/platinum, of which 350 must be gold or platinum                          |
| 5000                    | LM requirements, with at least 1000 silver, red or gold/platinum, of which 500 must be gold or platinum                        | <b>Diamond Life Master</b>  | 5000                    | LM requirements, with at least 1000 silver, red or gold/platinum, of which 500 must be gold or platinum                         |
| 7500                    | LM requirements, with at least 1500 silver, red or gold/platinum, of which 750 must be gold or platinum                        | <b>Emerald Life Master</b>  | 7500                    | LM requirements, with at least 1500 silver, red or gold/platinum, of which 750 must be gold or platinum                         |
| 10000                   | LM requirements, with at least 2000 silver, red or gold/platinum, of which 1000 must be gold or platinum, minimum 100 platinum | <b>Platinum Life Master</b> | 10000                   | LM requirements, with at least 2000 silver, red, or gold/platinum, of which 1000 must be gold or platinum, minimum 100 platinum |
| 10000                   | Platinum LM requirements and a qualifying National Title   | <b>Grand Life Master</b>    | 10000                   | Platinum LM requirements and a qualifying National Title  |

# MILESTONES



**New Diamond Life Masters**

Karl De Shrage  
Gary Helman  
Ravinder Ohri

Eppie Maidenbaum  
Laura O'Reilly  
Susan Reiter

**New Advanced NABC Masters**

Amy Barash  
Sharon Melville  
Fran Peterson

**New Bronze Life Masters**

**New Sapphire Life Masters**

Michael Botwin  
Leonard Domnitz

Stanley Adelman  
Beverly Channon  
Alan Cohen  
Robert Gordon  
Mona Graber

**New NABC Masters**

David Bass  
Howard Collins  
Ellen Cooper  
Susan Eisner  
Valerie Link

Elizabeth Shapiro  
Cecelia Sherman  
Maggie Silver  
Karen Siris  
Anthony Swanwick  
Ilan Wolff  
Leon Yu

**New Gold Life Masters**

Mark Blanchard  
Judy Paul

Jeanne Hanrahan  
Jonathan Howe  
Gary Levine

Carol Quist  
Karen Ruben  
Susan Seelig  
Vicki Seltzer  
Jill Toshav  
Gary Zipper

**New Sectional Masters**

Marlene Bloom  
Bunny Bursky  
Marcia Cooper  
Hal Davidson  
John Dean  
Ruth Feigen  
Bonnie Feld  
Phyllis Feldman  
Marie Franzoni  
Amy Glass  
Edward Hovsepian  
Nancy Kowal  
Gail Mandelbaum  
Helen Namm  
Renee Ritter  
Sandra Ryder  
Joanne Seitelman  
Richard Shanks

**New Ruby Life Masters**

Nancy Defren  
Ann Murray  
Lewis Pfeiffer  
Cal Rafuse  
Susan Toporovsky

Barry Port  
Susan Port  
Thomas Schwarz  
Erika Silver  
Helen Solomon  
Vimla Vadhan

**New Regional Masters**

John Bell  
Ann Block  
Anne Burns  
Oshri Endzweig  
June Feinsod  
Fred Levine  
Wendi Levitt  
Linda Linchitz  
Diane Lipman  
Kay Lippman  
Linda Neuwirth  
Hilda Schulkind

**New Life Masters**

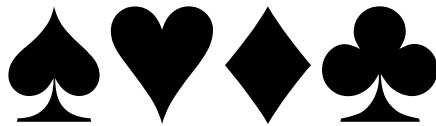
Beverly Channon  
Robert Gordon  
Mona Graber  
Jeanne Hanrahan  
Alan Hirshman  
Richard Holroyd  
Jonathan Howe  
Thomas Schwarz  
Erika Silver

**New Silver Life Masters**

Carol Benes  
Debbie Boockvar  
Janine Buss  
Raymond Elias  
Gary Feuer  
Joseph Fitt  
Alan Hirshman  
Debra Lamountain  
Joyce Lotters

# MILESTONES (continued from page 17)

|                         |                   |                           |                 |
|-------------------------|-------------------|---------------------------|-----------------|
| Maxine Shapiro          | Greg Callegari    | Nomy Zingher              | Carol Himelein  |
| Margaret Sherman        | Martin Einhorn    |                           | Nancy Kelly     |
| Steven Spaeth           | Susan Fishbein    | <b>New Junior Masters</b> | Jon Klein       |
| Susan Tashlik           | Mindy Goldman     | Madeline Alkon            | Dee Kramer      |
| Ross Taff               | Carol Leifer      | Carrie Andrejkovics       | Roberta Kusnetz |
| Milo Trudy              | Joseph Liefer     | Heather Bartholomew       | Lisa Lewis      |
| Leon Yu                 | Sanford Leventhal | Bruce Belsky              | Seymour Magier  |
|                         | Ken Lowenstein    | Noreen Bradley            | Jeffrey Marino  |
| <b>New Club Masters</b> | Lewis Miller      | Billye Hanan              | Bob Morrow      |
| Stephen Altman          | Myra Nazimowitz   | Diane Damiani             | Aida Nema       |
| Patricia Attonito       | Kaunt Pahlajani   | Ronald Dinehart           | Robert Peck     |
| Rusty Auerbach          | Ellyn Pflug       | Alvin Edelman             | Lenny Roth      |
| Richard Bauser          | George Sau        | Claudia Edelman           | Suzanne Schutz  |
| Leslie Brook            | Michael Scholnick | Missy Geddes              | Tea Stackler    |
| Donald Bruckner         | Louise Schwartz   | Linda Haltman             | Lynda Straker   |
| Carrie Callegari        | Howard Spear      | Michael Haltman           | Arnold Sundel   |



**NSBA Spring Regional**  
**May 7-10, 2018**  
**The Chateau Briand in Carle Place**  
**See Page 10 for Details**



# NSBA ISLANDER

## NSBA Top 100 Masterpoint Winners


|                       |          |                       |         |                     |         |
|-----------------------|----------|-----------------------|---------|---------------------|---------|
| 1 Mel Colchamiro (G)  | 18201.70 | 35 Jack Lipson        | 5231.84 | 69 Elli Zimmerman   | 3436.34 |
| 2 Bob Gwartzman       | 14313.05 | 36 Morton Case        | 5220.28 | 70 Lawrence Goodman | 3392.92 |
| 3 Ruth Stober         | 12970.83 | 37 Howard Friedman    | 5176.88 | 71 Frank Anshen     | 3390.66 |
| 4 Magdy Mesdary       | 10199.52 | 38 Karl De Shrage     | 5109.89 | 72 Bella Chiusano   | 3339.44 |
| 5 Diana Schuld        | 9646.35  | 39 Gary Helman        | 5038.55 | 73 Bart Cirker      | 3283.96 |
| 6 Doris Rodgers       | 8524.67  | 40 Ravinder Ohri      | 5017.73 | 74 Marie Barbeosch  | 3276.09 |
| 7 Irma Korenstein     | 8060.15  | 41 A Roger Elston     | 4683.47 | 75 Elaine Kahn      | 3270.66 |
| 8 Lesley Decker Lucas | 7844.23  | 42 Helen Buck         | 4660.99 | 76 Naomi Klosner    | 3252.01 |
| 9 Rob Gordon          | 7641.15  | 43 Lauren Block       | 4529.36 | 77 Eleanor Usis     | 3236.33 |
| 10 Honey Ellis        | 7234.18  | 44 Joseph Byrnes      | 4289.81 | 78 Steven Conrad    | 3205.77 |
| 11 Art Brodsky        | 7190.51  | 45 Steve Dick         | 4285.09 | 79 Rochelle Strauss | 3203.69 |
| 12 Judy Schwartz      | 7172.41  | 46 Patricia Brodsky   | 4264.74 | 80 James Schneider  | 3183.89 |
| 13 Alvin Levy         | 7054.19  | 47 Marilyn Weiss      | 4198.01 | 81 Elaine De Shrage | 3114.94 |
| 14 Richard Baumer     | 6895.92  | 48 Leslie Sarf        | 4151.51 | 82 Rayna Martin     | 3109.90 |
| 15 Karen Ewald        | 6824.69  | 49 Carl Gueli         | 4113.95 | 83 Frances Fein     | 3081.92 |
| 16 Gladys Collier     | 6533.56  | 50 Camille Khazzam    | 4086.65 | 84 Arthur Haley     | 3051.12 |
| 17 Russell Samuel     | 6491.97  | 51 John Berry         | 3914.78 | 85 Lawrence Margott | 3050.93 |
| 18 Louis Lessinger    | 6452.38  | 52 Peter Loeb         | 3897.99 | 86 Virginia Hoffman | 3049.65 |
| 19 Lillian Weissman   | 6389.74  | 53 Dori Cohen         | 3823.27 | 87 Alan Kudisch     | 2996.86 |
| 20 Geoffrey O'Connor  | 6041.97  | 54 Susan Scholer      | 3750.95 | 88 John Gibbs       | 2977.19 |
| 21 Flo Goldman        | 5966.78  | 55 Hannabelle White   | 3730.23 | 89 Marilyn Brescia  | 2968.31 |
| 22 Ljudmila Kamenova  | 5953.70  | 56 Paul Siegelman     | 3717.60 | 90 Lydia Betz       | 2947.78 |
| 23 Mark Leibowitz     | 5890.30  | 57 Michael Geisinger  | 3705.95 | 91 Mitchell Pollenz | 2939.97 |
| 24 Stephen Garyn      | 5859.65  | 58 Susan Weiss        | 3701.97 | 92 Joan Pollenz     | 2894.80 |
| 25 Saul Horowitz      | 5792.11  | 59 Anthony Rizzuto    | 3675.31 | 93 Reisha Berkowsky | 2846.45 |
| 26 Mildred Di Falco   | 5667.83  | 60 Howard Cohen       | 3666.58 | 94 Lin Fisher       | 2826.55 |
| 27 Stephen Lucas      | 5623.74  | 61 Michael Botwin     | 3631.78 | 95 Marianne Fulfaro | 2767.88 |
| 28 Robert Karlan      | 5535.16  | 62 Lester Goldman     | 3607.68 | 96 Susan Orne       | 2764.19 |
| 29 Alan Levine        | 5471.87  | 63 Alan Goldstein     | 3603.32 | 97 Mark Blanchard   | 2762.46 |
| 30 Kent Vandewater    | 5385.04  | 64 Shelley Drayzen    | 3549.93 | 98 Harold Thaw      | 2753.43 |
| 31 Martin Feldman     | 5275.20  | 65 Rona Reingold      | 3549.26 | 99 Dorothy Feldmann | 2745.91 |
| 32 Joan Asheroff      | 5262.87  | 66 Leonard Domnitz    | 3512.63 | 100 Gail Levy       | 2738.89 |
| 33 Charles Sharf      | 5259.09  | 67 Christine Woodring | 3480.07 |                     |         |
| 34 Barbara Mendelsohn | 5239.79  | 68 Robert Gold        | 3448.05 |                     |         |

# NSBA ISLANDER

## LONG ISLAND MASTER CLUB SCHEDULE

|                  | <b>Bridge Center<br/>At Congregation<br/>Shaaray Shalom</b><br>516-569-0307<br>711 Dogwood Avenue<br>West Hempstead<br>Lin Fisher | <b>Smithtown</b><br>631-360-8456<br>22 Lawrence Avenue<br>Smithtown<br>Sue Scholer, Carol Mathews | <b>Sagamore</b><br>516-558-7799<br>6901 Jericho Tpk<br>Syosset<br>Silvana Zangri | <b>Water Mill</b><br>631-726-6448<br>631-726-4540<br>1040 Montauk Hwy<br>Water Mill<br>Kathleen McLaughlen |
|------------------|---|---|--|--|
| <b>Monday</b>    | 12:30 pm open   | 10:30 am  | 10:30 am open and 0-750<br>7:00 pm open and 0-299                                | 12:30 pm open  |
| <b>Tuesday</b>   | 12:30 pm open   | 10:00 EZ Bridge   | 10:30 am   | 12:30 pm open  |
| <b>Wednesday</b> | 12:30 pm open   | 10:30 am Handicap<br>7:00 pm Bridge +   | 10:30 am open and 0-299<br>7 pm open, 7:00 pm 0-499                              |  |
| <b>Thursday</b>  | 12:30 pm open   | 3rd Thurs, Swiss 10:30 am<br>7:00 pm  | 10:30 am,<br>6:30 teams, twice monthly   | 12:30 pm open  |
| <b>Friday</b>    |   | 10:30 am  | 10:30 am open  |  |
| <b>Saturday</b>  |   | 12:00 pm Lesson<br>12:30 pm game  | 10:30 am 0-299, 1 pm open<br>1st Sat: 6 pm dinner/Swiss                          | 12:30 pm open  |
| <b>Sunday</b>    |   |   | 12:00 pm open  |  |

### OTHER SANCTIONED GAMES

|   |  |   |   |  |
|---|--|---|---|--|
| <p><b>Sagamore at Shelter Rock</b><br/>Shelter Rock Tennis Club<br/>100 LI Expwy, Manhasset<br/>516-558-7799<br/>Drew Tarhan<br/>Tues. 7:00 pm</p>                        | <p><b>Montauk BC</b><br/>Montauk Library<br/>631-668-2370<br/>Barbara Sullivan<br/>Wed. 12:30 pm (winter)<br/>1:00 pm (summer)</p>   | <p><b>South Shore BC</b><br/>9 Northwood Lane, Patchogue<br/>631-654-5313<br/>Pat Mahoney<br/>Thurs. 11:00 am, Sun 12:30 pm</p>   | <p><b>Westhampton DBC</b><br/>Westhampton Presbyterian<br/>Church<br/>90 Meetinghouse Road<br/>Westhampton<br/>Fri. 12:00 yaer round<br/>Mon. &amp; Wed. 12:00<br/>June—August<br/>516-770-4650<br/>Donald Bedell</p> | <p><b>Riverhead BC</b><br/>Riverhead Com Ctr<br/>Jamesport<br/>Thurs. 12:00 pm<br/>631-312-3332<br/>Barbara Cuenin</p> |
| <p><b>Bridge School of LI</b><br/>123 Merrick Ave<br/>East Meadow<br/>516-379-3000<br/>Aaron Silverstein<br/>Mon. 10 am &amp; 7:30 pm<br/>Thurs. 10:00 am</p>             | <p><b>Temple Judea BC</b><br/>333 Searingtown Rd<br/>Manhasset<br/>Mon. 12:30 pm<br/>718-279-1005<br/>Lyn Weiss<br/>—<br/>Tues. 12:00 pm<br/>718-279-1005<br/>Lyn Weiss<br/>—<br/>Thurs. 10:00 am<br/>631-271-6423<br/>Pat Brodsky</p> | <p><b>BRIDGEExpress</b><br/>Lake Success Jewish Center<br/>354 Lakeville Road<br/>516-299-6064<br/>Great Neck<br/>Cathy Kirshner<br/>Wed. 12:15 pm<br/>Thurs. 12:15 pm<br/>Fri. 10:00 am<br/>Sun. 1:00 pm</p> | <p><b>Atria BC</b><br/>146 Glen Street<br/>Glen Cove<br/>516-671-2095<br/>Mayer Wiesen<br/>Tues. 7:15 pm</p>  |                                   |
| <p><b>Mattituck Library DBC</b><br/>Knights of Columbus<br/>2050 Depot Lane<br/>Cutchogue<br/>631-734-8096<br/>Kathy Fibkins<br/>Tues. 12:00 pm<br/>Reservations only</p> | <p><b>Friedberg JCC Duplicate</b><br/>Friedberg JCC<br/>15 Neil Ct, Oceanside<br/>516-766-4341<br/>Eileen Isser &amp;<br/>Holly Roseman<br/>Fri. 10:00 am</p>  | <p><b>Pride of Judea</b><br/>243-02 Northern BLVD<br/>Douglaston<br/>Mon. 12:00 pm<br/>718-423-6200<br/>Louis Lessinger</p>   | <p><b>Gardiner's Bay BC</b><br/>Gardiner's Bay CC<br/>Shelter Island<br/>631-749-2021<br/>Lillian Kessler<br/>(summers only)</p>  |  |
| <p><b>South Shore League</b><br/>Seawanee CC and Woodmere<br/>CC, alternating monthly<br/>March-December<br/>Thurs. 1:00 pm<br/>568-1867<br/>Karen Ewald</p>              |  | <p><b>East Hampton DBC</b><br/>Hampton Day Care Center<br/>Gingerbread Lane<br/>Thurs 7 pm,<br/>April—Thanksgiving<br/>631-907-2917<br/>George Aman</p>   | <p><b>Garden City BC</b><br/>DBC Senior Rec Center<br/>Golf Club Lane<br/>Garden City<br/>516-781-4651<br/>Ellen Davidoff<br/>Thurs. 7:00 pm</p>  |  |

**NSBA 2018 Schedule of Events**

| <b><u>Date</u></b>    | <b><u>Event</u></b>       | <b><u>Location</u></b>                 |
|-----------------------|---------------------------|--|
| <b>March 20-26</b>    | <b>STaC Week</b>          | <b>Local Clubs</b>                     |
| <b>April 16</b>       | <b>NSBA Board Meeting</b> | <b>Sagamore BC</b>                     |
| <b>May 6</b>          | <b>LM-NLM Team Game</b>   | <b>Sagamore BC</b>                     |
| <b>May 7-10</b>       | <b>Spring Regional</b>    | <b>Chateau Briand,<br/>Carle Place</b> |
| <b>May 18-20</b>      | <b>Weekend STaC</b>       | <b>Local Clubs</b>                     |
| <b>May 20</b>         | <b>Awards Dinner</b>      | <b>Sagamore BC</b>                     |
| <b>June 25-July 1</b> | <b>STaC Week</b>          | <b>Local Clubs</b>                     |

**For Up-To-Date Information About Bridge On Long Island, Go To:  
[WWW.LIBRIDGE.COM](http://WWW.LIBRIDGE.COM)**